

1

Calcolare la superficie in m² della tapparella.
 Moltiplicare la dimensione della base (espressa in m) per l'altezza (espressa in m).

*Calculate the surface of the shutter in m².
 Multiply the dimension of the base (expressed in m) by the height (expressed in m)*

2

Calcolare il peso indicativo della tapparella.
 Moltiplicare la superficie ottenuta al punto 1 per il peso del materiale utilizzato (espresso in Kg/m²).

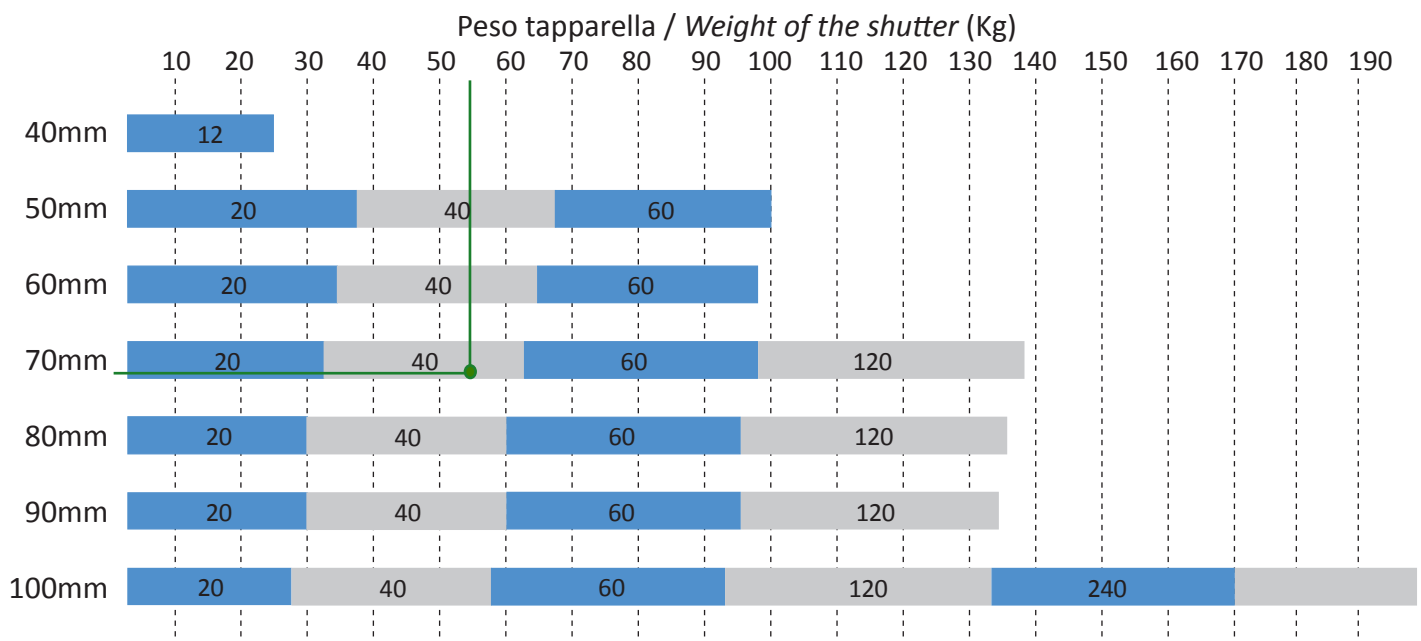
*Calculate the indicative weight of the shutter.
 Multiply the surface resulting at point 1 by the weight of the material used (express in Kg/m²).*

Materiale / Material	Peso / Weight (Kg/m ²)
Alluminio ad alta densità con poliuretano espanso <i>High density aluminium with polyurethane expanse</i>	3-9
Alluminio estruso - <i>Extruded aluminium</i>	7-12
PVC	5-10
Acciaio - <i>Steel</i>	8-12
Acciaio Sicurfer blindato - <i>Sicurfer blinded steel</i>	15-20
Legno - <i>Wood</i>	10-12

3

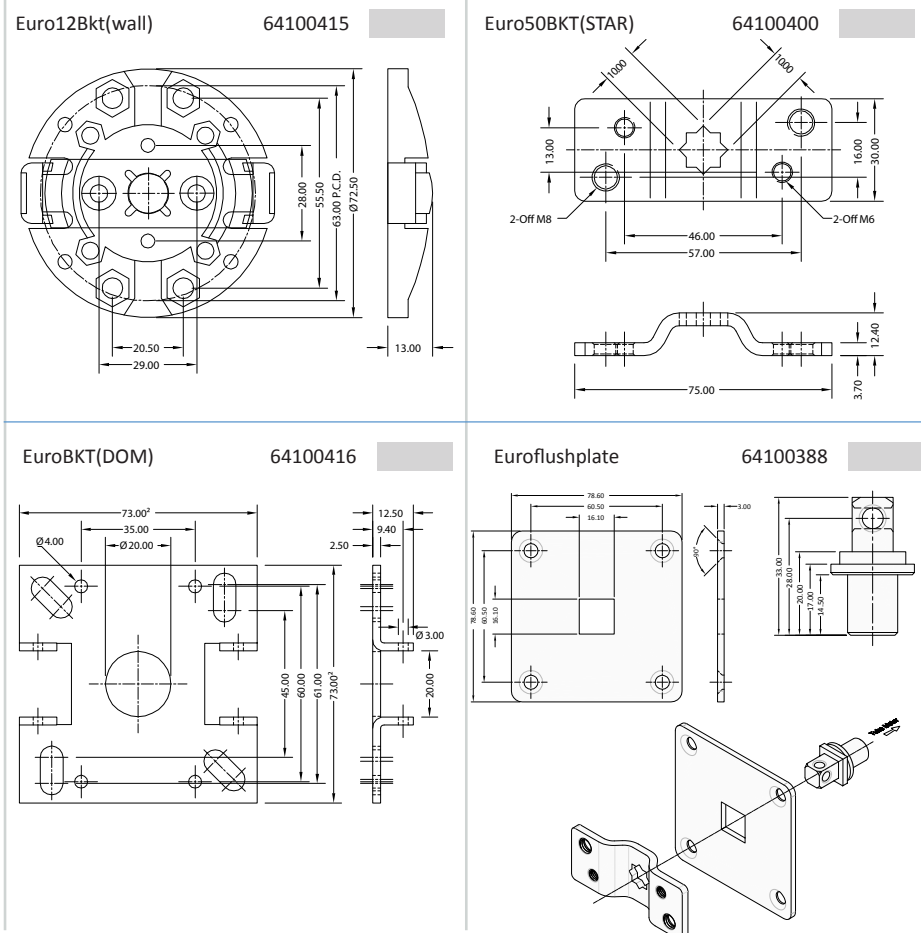
Individuare il motore da utilizzare.
 Scegliere la riga corrispondente alla dimensione del tubo avvolgitore, incrociando il peso della tapparella riportato in alto nella tabella. Esempio: per una tapparella di 55Kg montata su un tubo avvolgitore di 70mm di diametro sarà da utilizzare l'EURODRIVE 40.

*Identify the motor to use.
 Choose the line corresponding to the dimension of the coiler tube, crossing the weight of the shutter reported on the top of the table. Example: for a 55Kg shutter with a 70mm barrel diameter, it will be necessary to use the EURODRIVE 40*

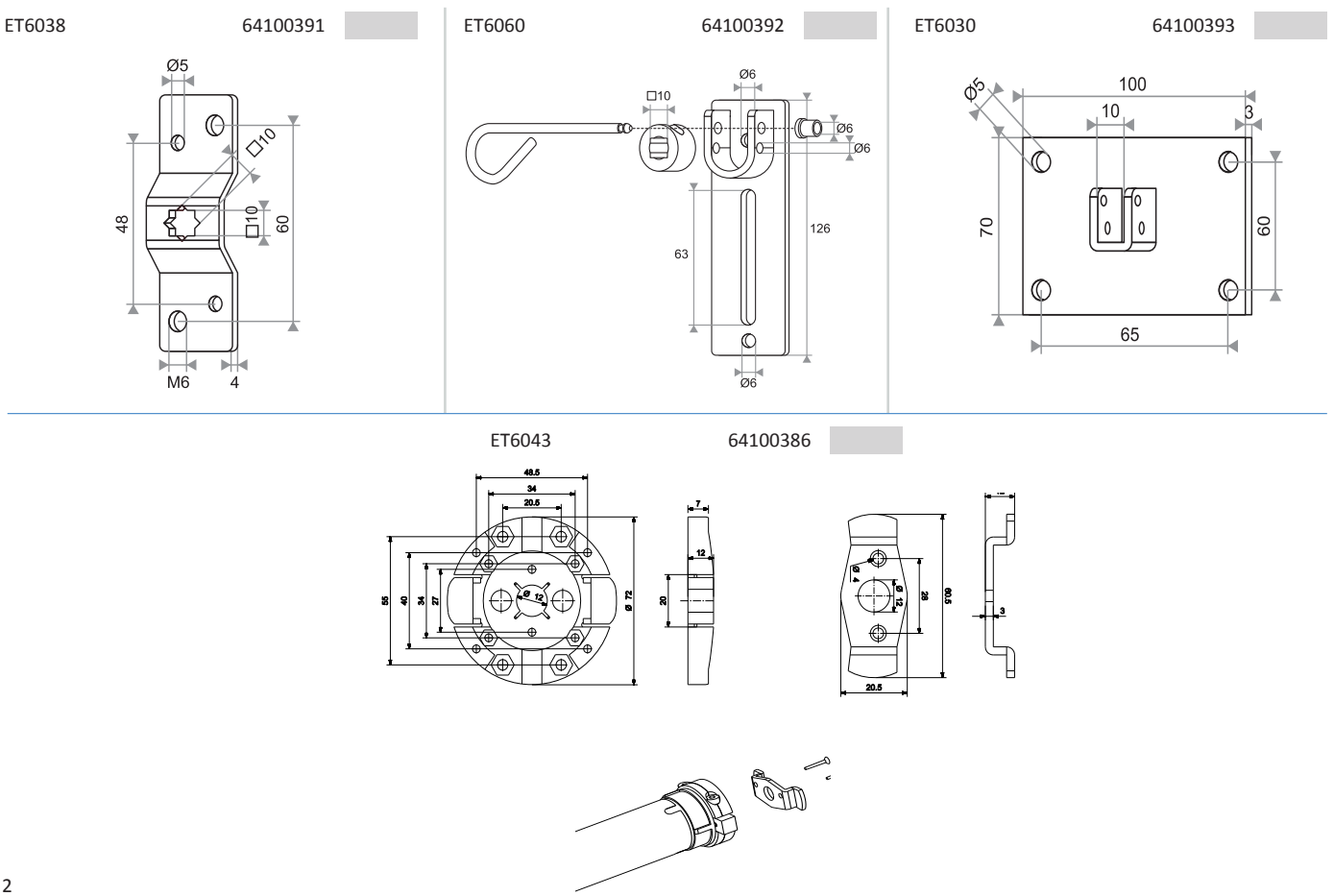


N.B.: sono da considerarsi le possibili deformazioni del tubo avvolgitore per garantire un corretto e durevole funzionamento del motore.
 N.B.: they must be considered the possible deflections of the barrel in order to guarantee a correct and durable functioning of the motor.

Serie EURODRIVE - Accessori / EURODRIVE series - Accessories



Serie EUROTEC & EUROPLUS - Accessori / EUROTEC & EUROPLUS series - Accessories

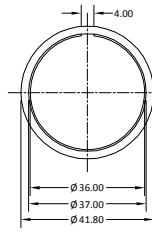


Serie EURODRIVE - Adattatori / EURODRIVE series - Adapters

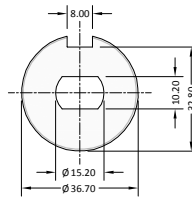
Coppia di adattatori per tubo rotondo.
Couple of adapters for round tube.

Ø motore Ø motor	Ø tubo Ø tube	Nome Name	Codice Code	Prezzo Price
35mm	40mm	ED0715	64100427	
35mm	50mm	ED0716	64100459	
45mm	56mm	ED0956	64100448	
45mm	60mm	ED0914	64100383	
59mm	67mm	ED1267	64100377	
59mm	94mm	ED1257	64100375	
59mm	97.3mm	ED1256	64100396	
92mm	94mm	ED3500A	64100424	
92mm	97.3mm	ED3501A	64100422	
92mm	120mm	ED3506A	64100423	
92mm	130mm	ED3515A	64100467	

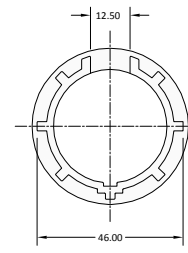
ED0715



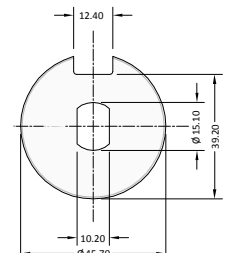
64100427



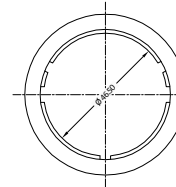
ED0716



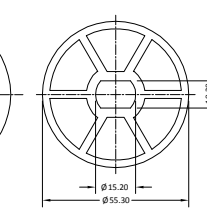
64100459



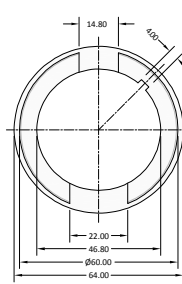
ED0956



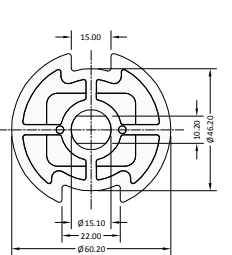
64100448



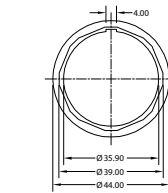
ED0914



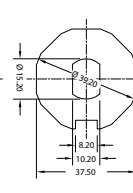
64100383



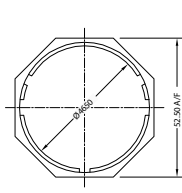
ED0711



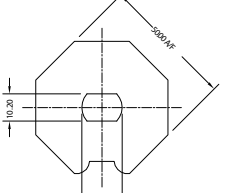
64100442



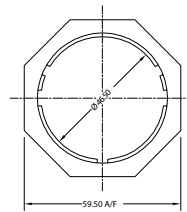
ED0949



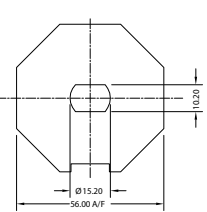
64100430



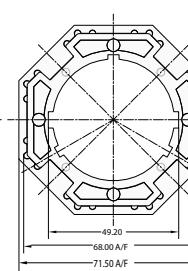
ED0916



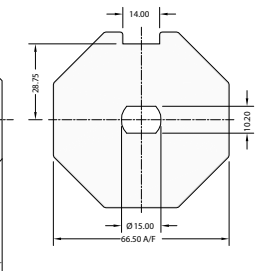
64100445



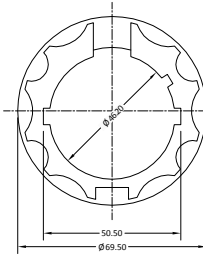
ED0912



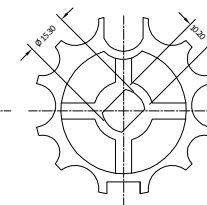
64100450



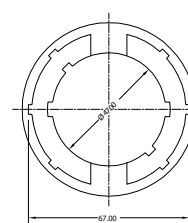
ED0968



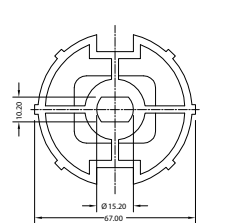
64100458



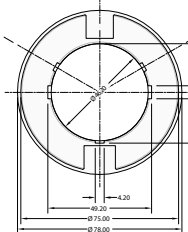
ED0967



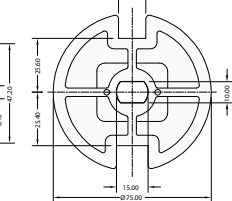
64100443



ED0976A



64100444



Coppia di adattatori per tubo ottagonale.
Couple of adapters for octagonal tube.

Ø motore Ø motor	Ø tubo Ø tube	Nome Name	Codice Code	Prezzo Price
35mm	40mm	ED0711	64100442	
45mm	50mm	ED0949	64100430	
45mm	60mm	ED0916	64100445	
45mm	70mm	ED0912	64100450	
59mm	70mm	ED1248	64100466	

Coppia di adattatori per tubo con ogiva.
Couple of adapters for tube with ogive.

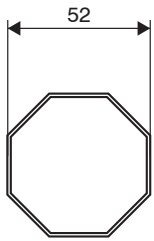
Ø motore Ø motor	Ø tubo Ø tube	Nome Name	Codice Code	Prezzo Price
45mm	70mm(*)	ED0968	64100458	
45mm	70mm	ED0967	64100443	
45mm	75mm	ED0976	64100444	
45mm	75mm(*)	ED0976A	64100380	
45mm	85mm	ED0904A	64100381	
59mm	75mm	ED1272	64100376	
59mm	75mm(*)	ED1275A	64100378	
59mm	78mm	ED1275	64100421	
59mm	85mm	ED1266	64100465	
59mm	85mm(*)	ED1266A	64100379	

(*) Tubo rotondo ondulato.

Serie EUROTEC & EUROPLUS - Adattatori / *EUROTEC & EUROPLUS series - Adapters*

ET5052

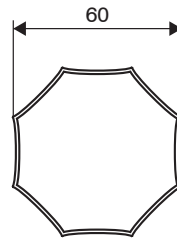
64100454



Coppia di adattatori per tubo ottagonale \varnothing 52mm.
Couple of adapters for \varnothing 52mm octagonal tube.

ET6015

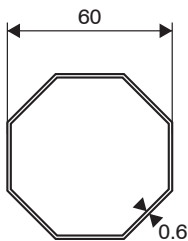
64100457



Coppia di adattatori per tubo ottagonale \varnothing 60mm.
Couple of adapters for \varnothing 60mm octagonal tube.

ET6025

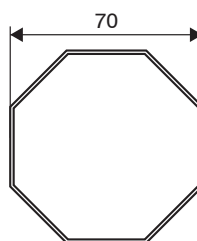
64100455



Coppia di adattatori per tubo ottagonale \varnothing 60 x 0.6mm.
Couple of adapters for \varnothing 60 x 0.6mm octagonal tube.

ET7025

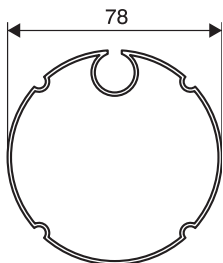
64100456



Coppia di adattatori per tubo ottagonale \varnothing 70mm
Couple of adapters for \varnothing 70mm octagonal tube.

ET7815

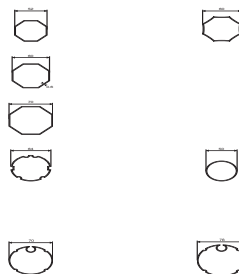
64100451



Coppia di adattatori per tubo con ogiva \varnothing 78mm.
Couple of adapters for \varnothing 78mm tube with ogive.

ET7015

64100452



Coppia di adattatori per tubo con ogiva \varnothing 70mm.
Couple of adapters for \varnothing 70mm tube with ogive.